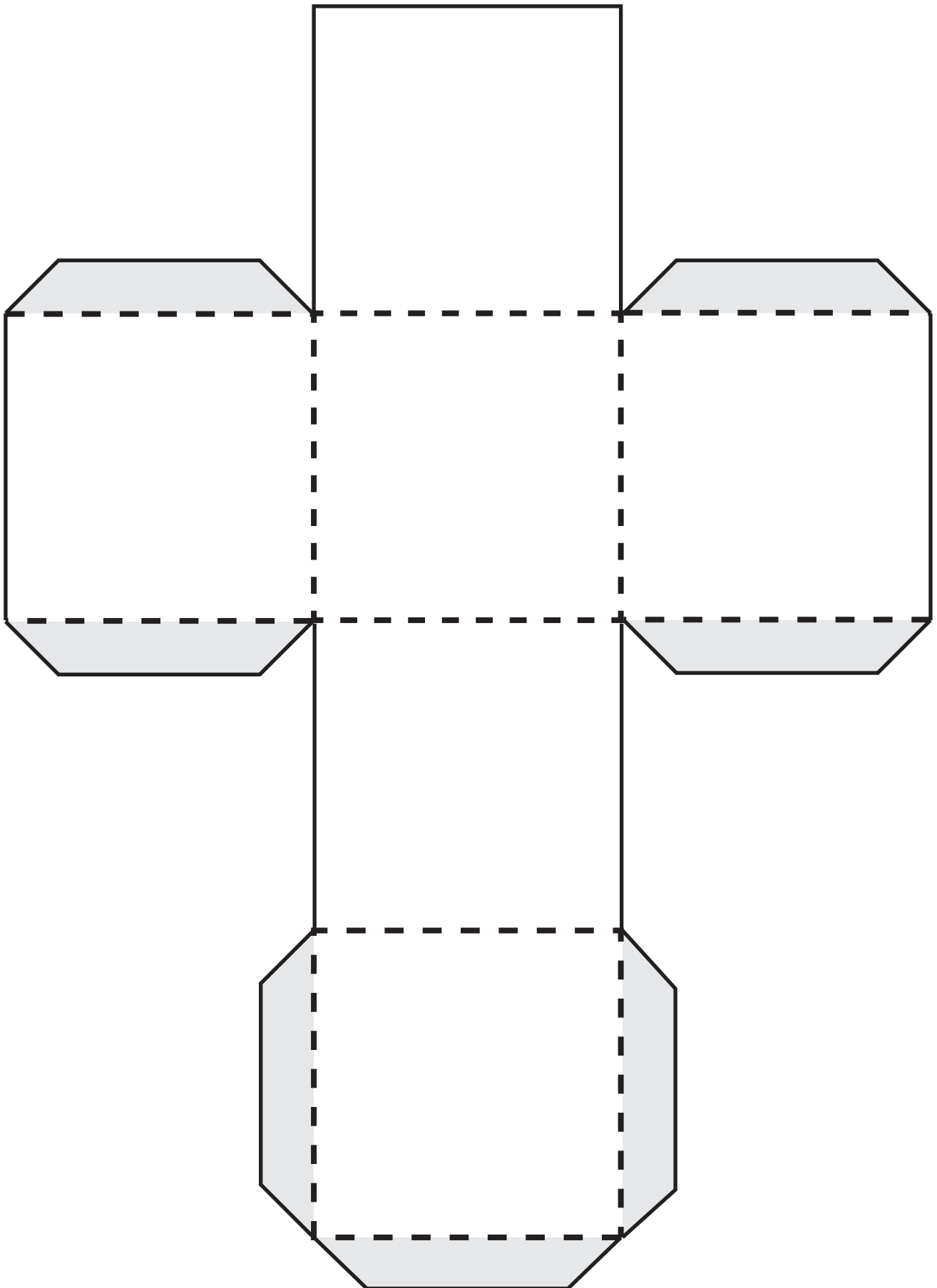


## Make a 3D shape from a net

1. Cut along the solid lines
2. Fold along the dotted lines
3. Glue on the back of the gray areas



1. Cut along the solid lines
2. Fold along the dotted lines
3. Glue on the back of the gray areas

- 
- A net of a cube is shown, consisting of six squares arranged in a cross pattern. The four outer squares (top, bottom, left, and right) are shaded light gray. The central square is white. Dashed lines indicate the fold lines for the cube. The top and bottom squares have trapezoidal flaps extending outwards, which are also shaded light gray. The left and right squares have trapezoidal flaps extending inwards, which are also shaded light gray.

## Make a 3D shape from a net

1. Cut along the solid lines
2. Fold along the dotted lines
3. Glue on the back of the gray areas

